




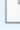






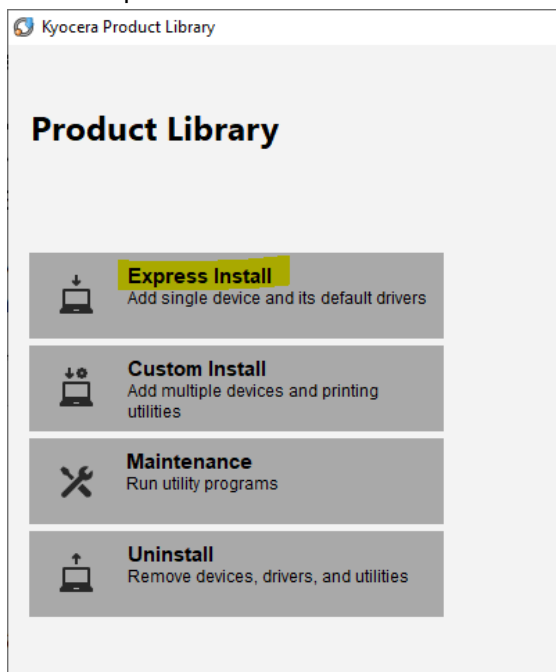
Driver Installation Procedure:

Driver Download link: https://downloads.kyoceradocumentsolutions.com.au/Drivers/KX_Driver.zip

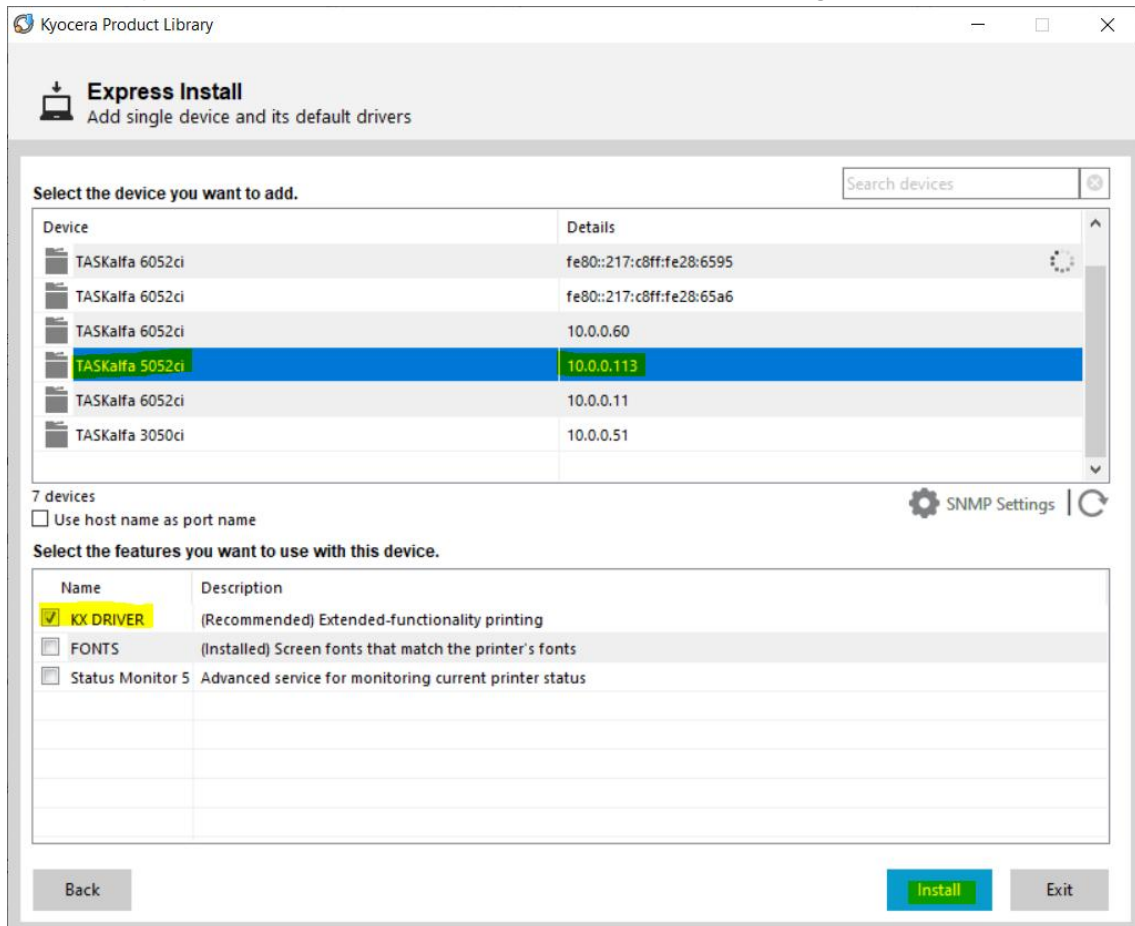
1. Head to the location you have downloaded the driver and right click and press Extract to KX_Driver, open the “en” folder and run the “setup.exe” file which is marked with a disc icon.

 KmUninstall	06/06/2023 2:19 PM	Application	1,206 KB
 KmUsb.dll	06/06/2023 2:19 PM	Application exten...	84 KB
 KX.pnf	06/06/2023 2:19 PM	Precompiled Setu...	75 KB
 KxPackagerDII.dll	06/06/2023 2:19 PM	Application exten...	175 KB
 KyoRm	06/06/2023 2:19 PM	Configuration sett...	7 KB
 lang.dat	06/06/2023 2:19 PM	DAT File	157 KB
 lang4.dat	06/06/2023 2:19 PM	DAT File	139 KB
 Setup	06/06/2023 2:19 PM	Application	112 KB
 setup	06/06/2023 2:19 PM	Configuration sett...	1 KB
 upd.pnf	06/06/2023 2:19 PM	Precompiled Setu...	10 KB

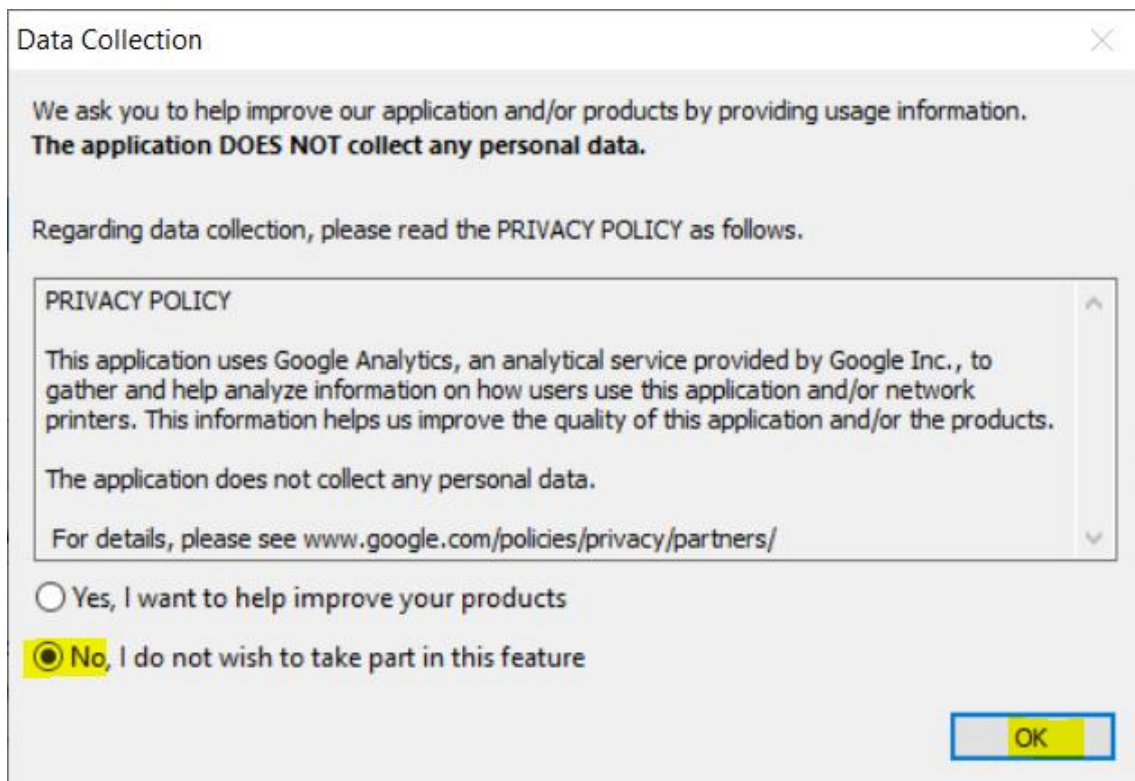
2. Select Express Install.



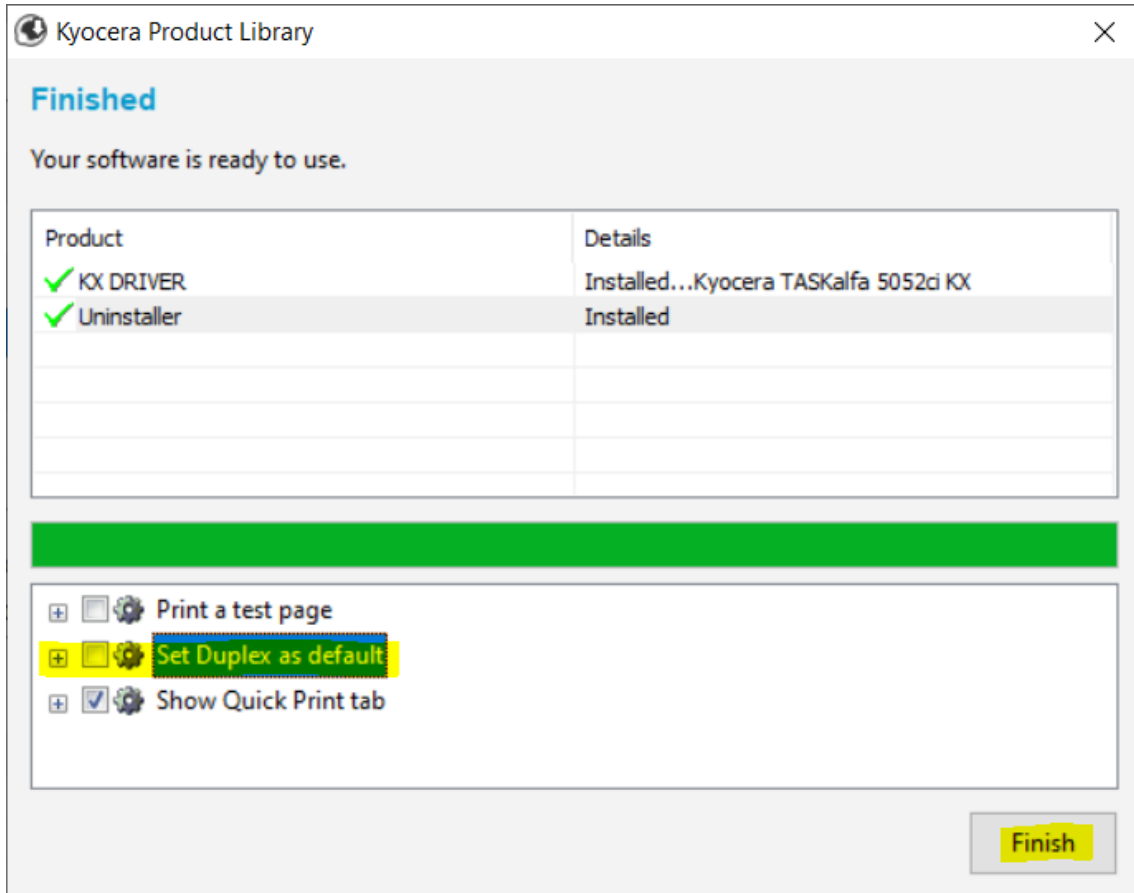
3. Select the printer to be installed and tick KX Driver before clicking install.



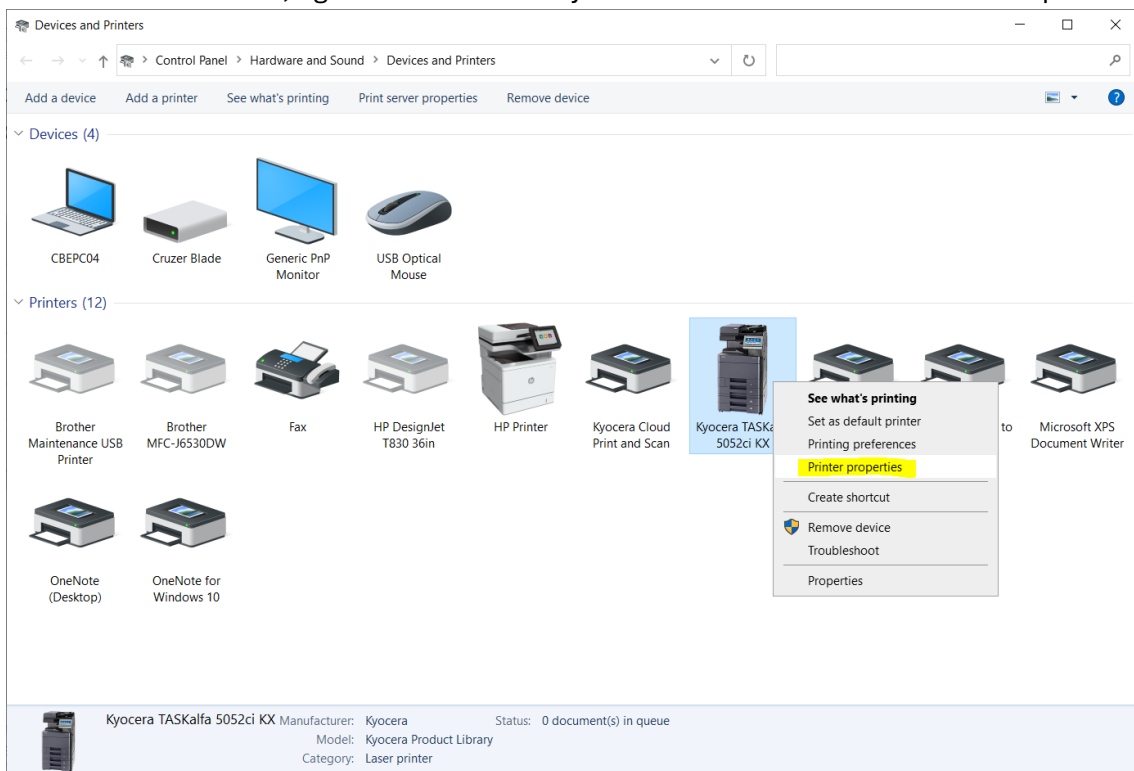
4. Select No and click OK.



5. Unselect Set Duplex as default and then click Finish



6. In Device and Printers, right click on the newly created driver and select Printer Properties.



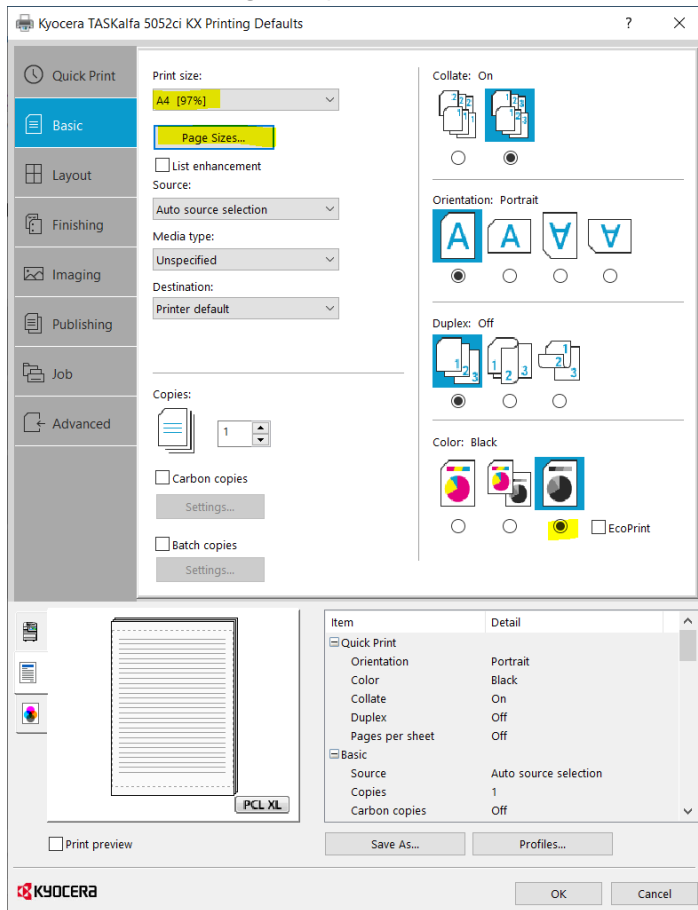
7. Alternatively, by heading to your Printer and Scanners settings page and pressing Manage and Printer Properties.

The screenshot shows the Windows 'Printers & scanners' settings page. On the left, under 'Printers & scanners', the 'Kyocera TASKalfa 3252ci KX' is listed as the 'Default' printer. Below it are buttons for 'Open queue', 'Manage', and 'Remove device'. The 'Manage' button is highlighted in yellow. On the right, under 'Manage your device', the printer status is 'Default'. There are buttons for 'Open print queue' and 'Set as default'. Below these are links for 'Print a test page', 'Run the troubleshooter', 'Printer properties' (highlighted in yellow), 'Printing preferences', and 'Hardware properties'.

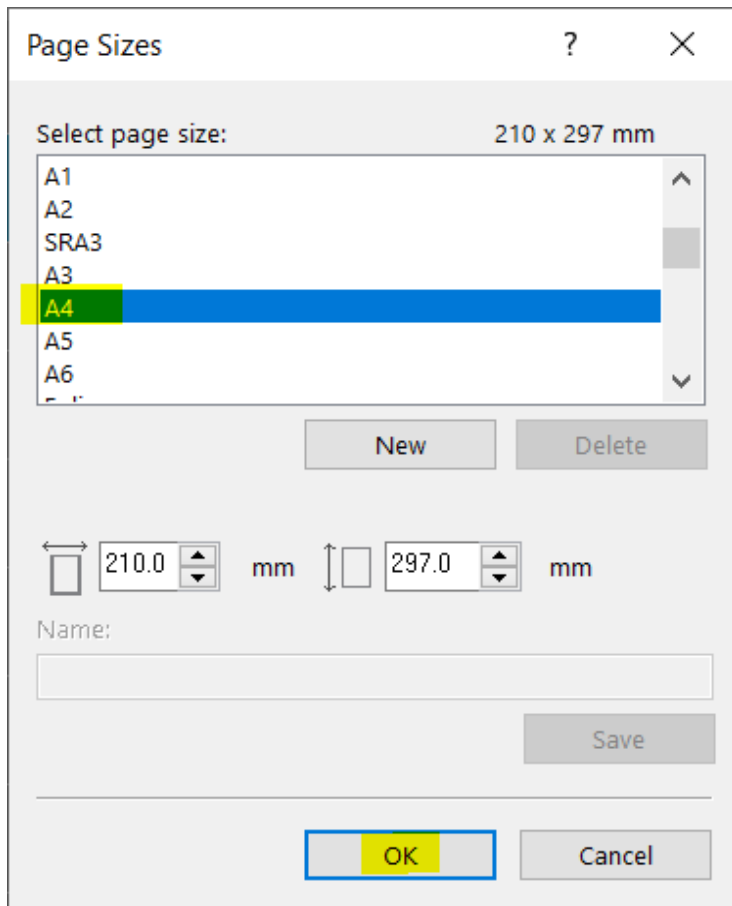
8. Select the Advanced tab then click Printing Defaults...

The screenshot shows the 'Kyocera TASKalfa 5052ci KX Properties' dialog box with the 'Advanced' tab selected. The 'Advanced' tab is highlighted in yellow. The 'Always available' radio button is selected. The 'Available from' and 'To' fields are both set to '12:00 AM'. The 'Priority' is set to '1'. The 'Driver' is 'Kyocera TASKalfa 5052ci KX'. The 'Spool print documents so program finishes printing faster' radio button is selected, with 'Start printing immediately' also selected. The 'Print directly to the printer' radio button is unselected. The 'Hold mismatched documents' checkbox is unselected. The 'Print spooled documents first' checkbox is checked. The 'Keep printed documents' checkbox is unselected. The 'Enable advanced printing features' checkbox is checked. At the bottom, there are buttons for 'Printing Defaults...' (highlighted in yellow), 'Print Processor...', and 'Separator Page...'. At the very bottom are 'OK', 'Cancel', and 'Apply' buttons.

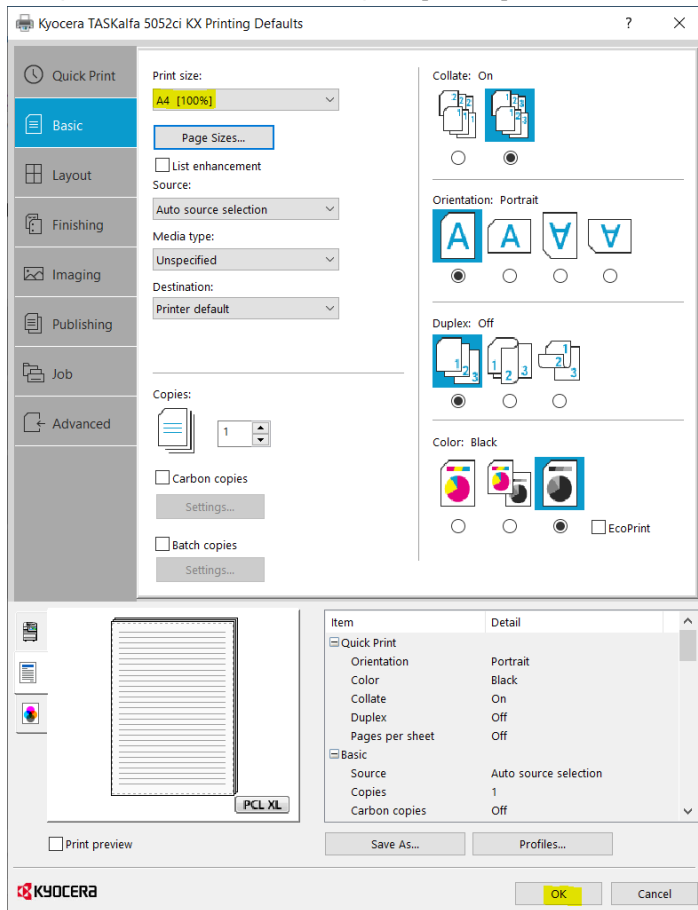
9. Select Mono, change the print size to A4 and then click Page Sizes...



10. Select A4 and then click OK



11. The print size should now say A4 [100%], when it does click OK.



12. In Printer Properties click General, change the printer name to Main Office Photocopier and then confirm that the setting you put into Printer Defaults are the same as what's shown in Preferences...

